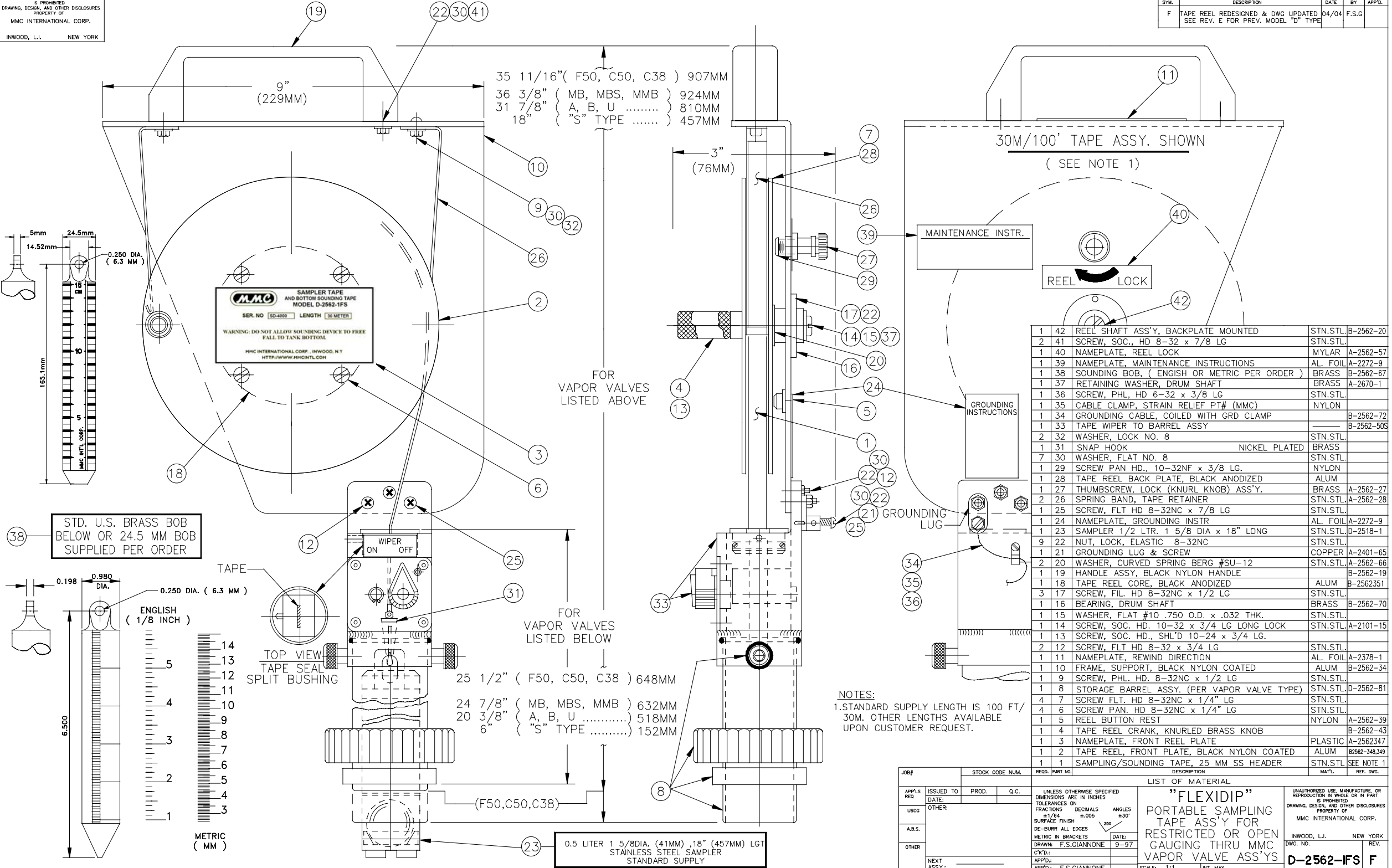


REVISIONS				
SYM.	DESCRIPTION	DATE	BY	APP'D.
F	TAPE REEL REDESIGNED & DWG UPDATED	04/04	F.S.G	
	SEE REV. E FOR PREV. MODEL "D" TYPE			



QTY	DESCRIPTION	STN. STL.	REF. DWG.
1	42 REEL SHAFT ASS'Y, BACKPLATE MOUNTED	STN.STL.	B-2562-20
2	41 SCREW, SOC., HD 8-32 x 7/8 LG	STN.STL.	
1	40 NAMEPLATE, REEL LOCK	MYLAR	A-2562-57
1	39 NAMEPLATE, MAINTENANCE INSTRUCTIONS	AL. FOIL	A-2272-9
1	38 SOUNDING BOB, (ENGLISH OR METRIC PER ORDER)	BRASS	B-2562-67
1	37 RETAINING WASHER, DRUM SHAFT	BRASS	A-2670-1
1	36 SCREW, PHL, HD 6-32 x 3/8 LG	STN.STL.	
1	35 CABLE CLAMP, STRAIN RELIEF PT# (MMC)	NYLON	
1	34 GROUNDING CABLE, COILED WITH GRD CLAMP		B-2562-72
1	33 TAPE WIPER TO BARREL ASSY		B-2562-50S
2	32 WASHER, LOCK NO. 8	STN.STL.	
1	31 SNAP HOOK	NICKEL PLATED BRASS	
7	30 WASHER, FLAT NO. 8	STN.STL.	
1	29 SCREW PAN HD., 10-32NF x 3/8 LG.	NYLON	
1	28 TAPE REEL BACK PLATE, BLACK ANODIZED	ALUM	
1	27 THUMBSCREW, LOCK (KNURL KNOB) ASS'Y.	BRASS	A-2562-27
2	26 SPRING BAND, TAPE RETAINER	STN.STL.	A-2562-28
1	25 SCREW, FLT HD 8-32NC x 7/8 LG	STN.STL.	
1	24 NAMEPLATE, GROUNDING INSTR	AL. FOIL	A-2272-9
1	23 SAMPLER 1/2 LTR. 1 5/8 DIA x 18" LONG	STN.STL.	D-2518-1
9	22 NUT, LOCK, ELASTIC 8-32NC	STN.STL.	
1	21 GROUNDING LUG & SCREW	COPPER	A-2401-65
2	20 WASHER, CURVED SPRING BERG #SU-12	STN.STL.	A-2562-66
1	19 HANDLE ASSY, BLACK NYLON HANDLE		B-2562-19
1	18 TAPE REEL CORE, BLACK ANODIZED	ALUM	B-2562351
3	17 SCREW, FIL. HD 8-32NC x 1/2 LG	STN.STL.	
1	16 BEARING, DRUM SHAFT	BRASS	B-2562-70
1	15 WASHER, FLAT #10 .750 O.D. x .032 THK.	STN.STL.	
1	14 SCREW, SOC. HD. 10-32 x 3/4 LG LONG LOCK	STN.STL.	A-2101-15
1	13 SCREW, SOC. HD., SHL'D 10-24 x 3/4 LG.		
2	12 SCREW, FLT HD 8-32 x 3/4 LG	STN.STL.	
1	11 NAMEPLATE, REWIND DIRECTION	AL. FOIL	A-2378-1
1	10 FRAME, SUPPORT, BLACK NYLON COATED	ALUM	B-2562-34
1	9 SCREW, PHL. HD. 8-32NC x 1/2 LG	STN.STL.	
1	8 STORAGE BARREL ASSY. (PER VAPOR VALVE TYPE)	STN.STL.	D-2562-81
4	7 SCREW FLT. HD 8-32NC x 1/4" LG	STN.STL.	
4	6 SCREW PAN. HD 8-32NC x 1/4" LG	STN.STL.	
1	5 REEL BUTTON REST	NYLON	A-2562-39
1	4 TAPE REEL CRANK, KNURLED BRASS KNOB		B-2562-43
1	3 NAMEPLATE, FRONT REEL PLATE	PLASTIC	A-2562347
1	2 TAPE REEL, FRONT PLATE, BLACK NYLON COATED	ALUM	B2562-348,349
1	1 SAMPLING/SOUNDING TAPE, 25 MM SS HEADER	STN.STL.	SEE NOTE 1

JOB#	STOCK CODE NUM.	REQD. PART NO.	DESCRIPTION	MATL.	REF. DWG.
LIST OF MATERIAL					
APPL'S REQ	ISSUED TO	PROD.	Q.C.	UNLESS OTHERWISE SPECIFIED DIMENSIONS ARE IN INCHES	
DATE:	OTHER:		TOLERANCES ON FRACTIONS: DECIMALS ANGLES		
USDC	OTHER:		±1/64 ±.005 ±30'		
A.B.S.	OTHER:		SURFACE FINISH: DC-BURR ALL EDGES DATE: 9-97		
OTHER	NEXT ASSY.:		DRAWN: F.S.GIANNONE		
APP'D.:			DATE: 9-97		
APP'D.:			DATE: 9-97		

"FLEXIDIP"
 PORTABLE SAMPLING TAPE ASS'Y FOR RESTRICTED OR OPEN GAUGING THRU MMC VAPOR VALVE ASS'YS

UNAUTHORIZED USE, MANUFACTURE, OR REPRODUCTION IN WHOLE OR IN PART IS PROHIBITED. DRAWING, DESIGN, AND OTHER DISCLOSURES PROPERTY OF MMC INTERNATIONAL CORP. INWOOD, L.I. NEW YORK DWG. NO. REV.

D-2562-IFS F